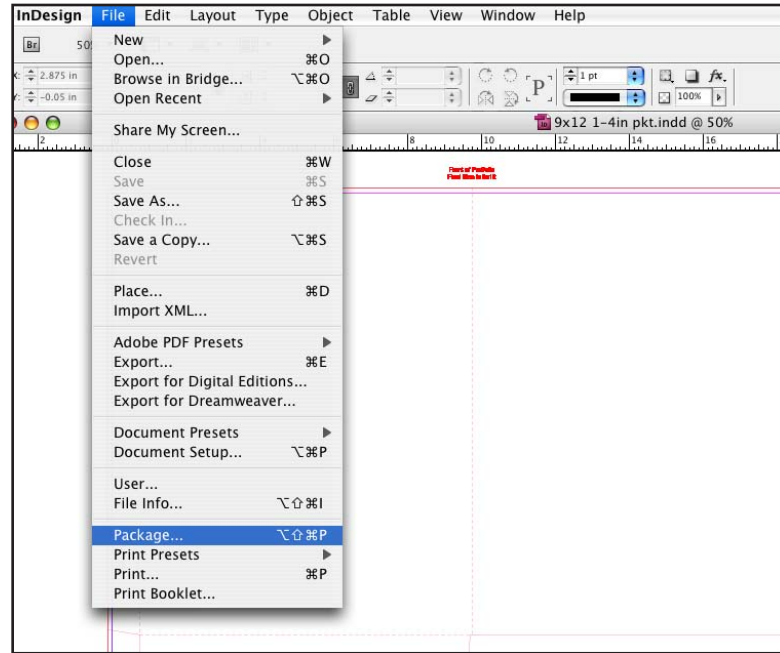


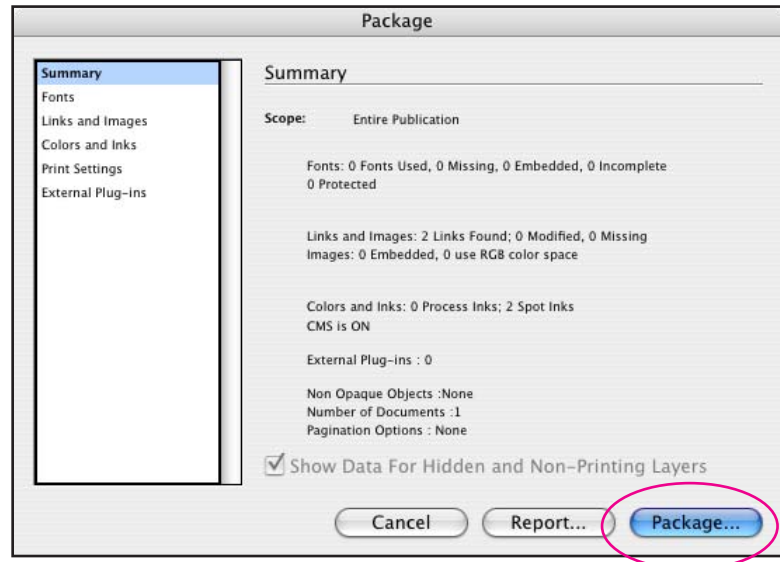
# ~ Packaging files from Indesign ~

With your Indesign doc open, make sure that all of the fonts are present and all of the links are up to date.

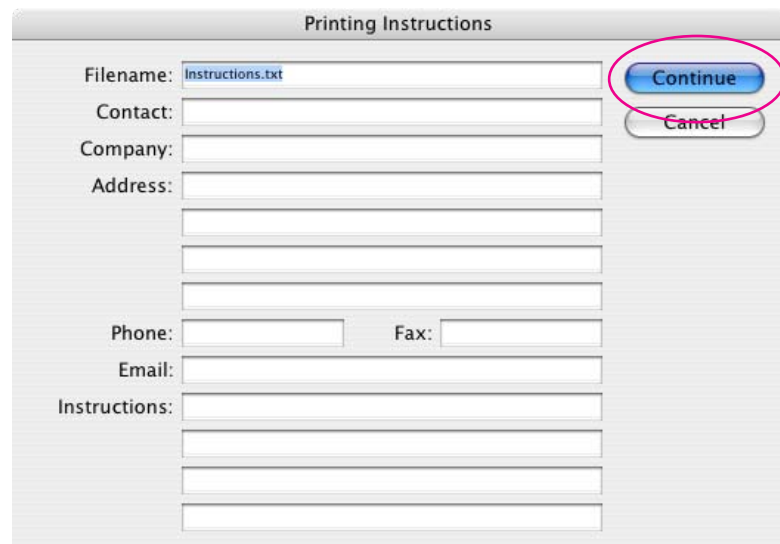
1. Under the **File** menu, choose **Package...**



2. Choose **Package**

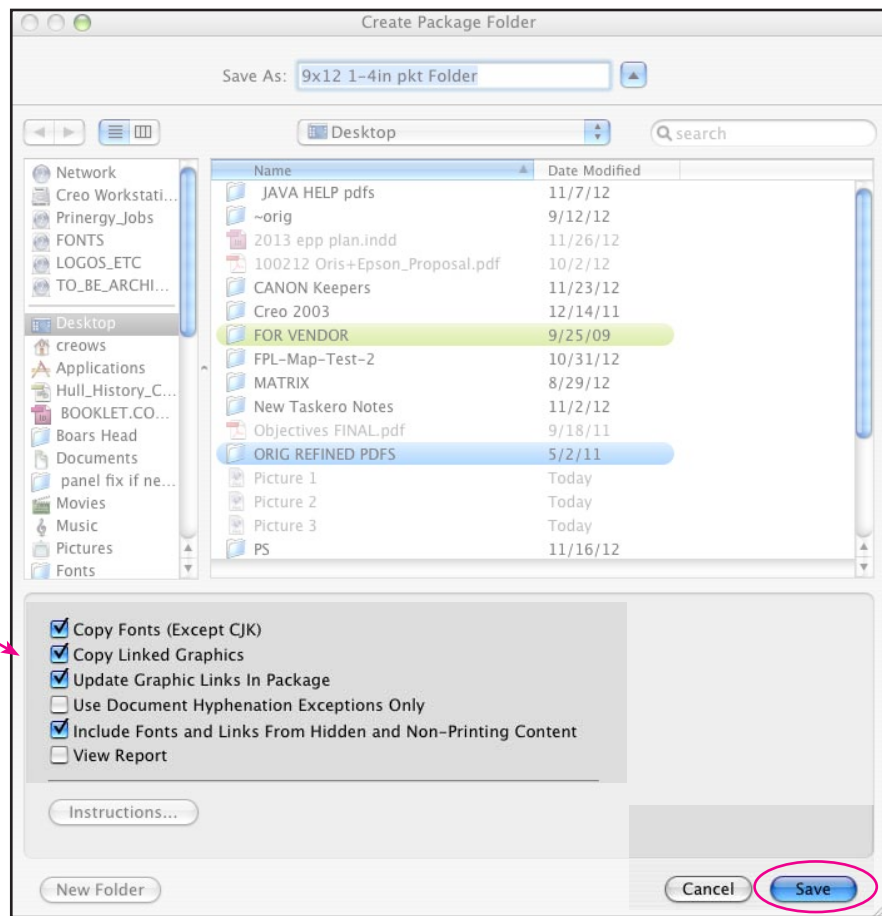


3. Choose **Continue**



4. Check off these boxes and choose Save

\*It's probably best to save it to your desktop for ease of finding the packaged file.



5. If a warning comes up about fonts, choose OK



3. InDesign will create a folder that contains the InDesign doc, the links and the fonts used for the job.

